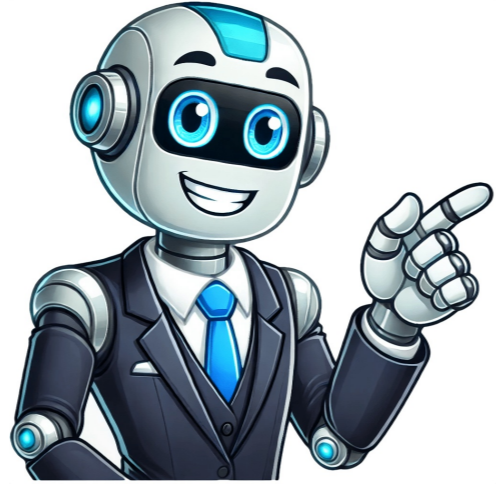


Click to verify



Ark Pioneer Academy is a free schools situated in locality of Underhill. It has been offering exceptional educational opportunities for students aged between 11 and 19. Situated on Westcombe Drive, in the town of Barnet, the school is within the parliamentary constituency of Chipping Barnet. This is a mixed gender school has a maximum capacity of 1200 pupils, with the school's current pupil count stands at 537 pupils with 346 boys and 191 girls. Ark Pioneer Academy Also has an official sixth form. As per the latest data, 28.10% of the students in Ark Pioneer Academy receive Free School Meals (FSM), underlining the school's commitment to providing for pupils from all walks of life. Ms Aishling Ryan (the) leads a dedicated team of educators and staff members. Ark Pioneer Academy Profile URN147061 Education PhaseSecondary School TypeFree schools Age Range11-19 year old BoardersNo boarders Nursery ProvisionNo Nursery Classes Official Sixth FormHas a sixth form GenderMixed Religious Character Diocese School Max. Capacity1200 students AddressWestcombe Drive , EN5 2BE RegionLondon DistrictBarnet TownBarnet WardUnderhill Website Phone2037874090Other Info for Ark Pioneer Academy School Status: Open, since 02-09-2019 Ofsted Rating: Parliamentary Constituency: Chipping Barnet Inspectorate Name:Ark Pioneer Academy Address & Location This education institution is located in Westcombe Drive, Underhill, Barnet, London EN5 2BE. You can call the school on 2037874090 or visit their website on . View location in Google Maps »Compare With Surrounding Schools in BarnetTeachers & School WorkforceArk Pioneer Academy have a total of 52 teachers in their school, with 46 of them are classroom teachers. Only 3% of them are above the age of 50. In Ark Pioneer Academy the pupil to teachers ratio is 13.8, which means 1 teacher teaches around 13 pupils. Teachers & Staff Composition Pupils ComparisonA simple comparison on number of pupils currently studying in Ark Pioneer Academy.Attention: We cannot guarantee and are not responsible for the accuracy and timeliness of the data on this page. Always cross-check again with the school authorities. Type Secondary / Free schools Age Range 11-19 Religion Unknown Address Westcombe Drive Barnet EN5 2BE Phone 02037874090 Reference Number 147061 Number of pupils 998 Boy/Girl ratio Boys: 64.43% Girls: 35.57% Percentage of students eligible for free school meals 38.8% Percentage of students where English is not their first language 33.3% Average size of one teacher classes 25 Year Boys Girls Total 7 110 71 181 8 119 61 180 9 120 59 179 10 107 71 178 11 112 65 177 12 75 28 103 13 Unknown Unknown Unknown Ethnicity Percentage White, Other 20.6% White, British 19.4% African 13.1% Mixed, Other 8% Indian 4.9% White & Asian 3.2% Chinese 2.8% White & Black (African) 2.5% Caribbean 2.4% Unclassified 2% White & Black (Caribbean) 1.7% Pakistani 1.7% Asian, Other 1.7% Irish 0.1% Overall Ofsted Rating Outstanding > Quality of education Outstanding > Behaviour & Attitude Outstanding > Personal Development Outstanding > Leadership & Management Outstanding Last Inspection Date 2023-10-11 Date Description Report 2023-09-13 School inspection: School inspection: Attainment 8 is a measure of a pupil's average grade across a set of 8 subjects. The 8 subjects which make up Attainment 8 are: English Maths 3 subjects from qualifications that count towards the English Baccalaureate (EBacc), like sciences, language and history 3 more GCSE qualifications (including EBacc subjects) or technical awards from a list approved by the Department for Education Each grade a pupil gets is assigned a point score from 9 (the highest) to 1 (the lowest). These scores are added up, with English and maths counted twice. School Score Percentile (local) Percentile (nationwide) 54.3 Unlock Unlock Metric School Score Percentile (total) Percentile (nationwide) Grade 5 or above in English and maths 65.9% Unlock Unlock 5 or more GCSEs at grade 9-4 (or A-C) 75.6% Unlock Unlock A progress score is a way to measure how well a student progressed in comparison to other students of a similar starting ability. A score of zero means would mean that a student made the same progress as others that had a similar starting ability. A positive score would mean that the student made more progress than other students of similar starting ability. The scores below are for the whole school so is the average progress score across all students. School Score Percentile (loc) Percentile (nationwide) 0.57 Unlock Unlock Note: Exam results were not published in 2021 and 2022 due to the pandemic. Attainment 8 is a measure of a pupil's average grade across a set of 8 subjects. The 8 subjects which make up Attainment 8 are: Note: Exam results were not published in 2021 and 2022 due to the pandemic. Note: Exam results were not published in 2021 and 2022 due to the pandemic. A progress score is a way to measure how well a student progressed in comparison to other students of a similar starting ability. A score of zero means would mean that a student made the same progress as others that had a similar starting ability. A positive score would mean that the student made more progress than other students of similar starting ability. The scores below are for the whole school so is the average progress score across all students. Number of Applications Number of Offers First Preference Unlock Unlock Second Preference 227 15 Third Preference 179 1 From another Local Authority 101 7 Name Distance St Catherine's RC School Vale Drive, Barnet, Hertfordshire, EN5 2ED 0.19 miles Lyonsdown School 0.5 miles Underhill School Mays Lane, Barnet, Hertfordshire, EN5 2LZ 0.59 miles Cromer Road Primary School Cromer Road, New Barnet, Barnet, Hertfordshire, EN5 5HT 0.75 miles St Margaret's Nursery School Margaret Road, Barnet, EN4 9NT 1.03 miles Foulds School Byng Road, Barnet, Hertfordshire, EN5 4NR 1.06 miles Whittings Hill Primary School Whittings Road, Barnet, Hertfordshire, EN5 2QY 1.13 miles St Andrew's CofE Voluntary Aided Primary School, Totteridge The Green, Totteridge, London, N20 8NX 1.14 miles Monken Hadley CofE Primary School Canlet Way, Monken Hadley, Barnet, Hertfordshire, EN4 0NJ 1.15 miles Brookhill Nursery School Brookhill Road, Barnet, EN4 8SD 1.17 miles Christ Church Primary School Byng Road, Christ Church Primary School, Barnet, Hertfordshire, EN5 4NS 1.23 miles Livingstone Primary and Nursery School Baring Road, New Barnet, Barnet, Hertfordshire, EN4 9BU 1.25 miles St Mary's CofE Primary School, East Barnet Littlegrove, East Barnet, Barnet, Hertfordshire, EN4 8SR 1.35 miles Danegrove Primary School Windsor Drive, East Barnet, Barnet, Hertfordshire, EN4 8UD 1.43 miles St John's CofE Primary and Nursery School Swan Lane, Whetstone, London, N20 0PL 1.49 miles Alma Primary Friern Barnet Lane, Whetstone, London, N20 0LP 1.5 miles Woodridge Primary School Southover, London, N12 7HE 1.54 miles All Saints' CofE Nursery and Primary School N20 116 Oakleigh Road North, Whetstone, London, N20 9EZ 1.57 miles Church Hill School Burlington Rise, East Barnet, Barnet, Hertfordshire, EN4 8NN 1.59 miles Queenswell Infant & Nursery School Sweets Way, Whetstone, Sweets Way, N20 0NQ, London, N20 0NQ 1.62 miles There are too many schools to show on the map at one time. Please either zoom in or adjust the filters to reduce the number of schools. © 2025 School Ratings We are a secondary school offering a great education for local children in Barnet, London. We can't wait to welcome you to our school, here are some of the things you can expect when you join our vibrant community. Explore what makes our Academy great, how to apply, and when our open days are. All the information our parents need to know in one handy place. Our provision for ages 16-18. % Parents Recommend This School Strongly Agree Agree Disagree Strongly Disagree Don't Know {"strongly agree"=>59, "agree"=>35, "disagree"=>3, "strongly disagree"=>2, "dont know"=>1} UNLOCK Figures based on 172 responses up to 20-12-2023 Strongly Agree Agree Disagree Strongly Disagree Don't Know {"strongly agree"=>63, "agree"=>33, "disagree"=>1, "strongly disagree"=>2, "dont know"=>2} UNLOCK Figures based on 172 responses up to 20-12-2023 Strongly Agree Agree Disagree Strongly Disagree Don't Know {"strongly agree"=>66, "agree"=>26, "disagree"=>3, "strongly disagree"=>2, "dont know"=>2} UNLOCK Figures based on 172 responses up to 20-12-2023 My Child Has Not Been Bullied Strongly Agree Agree Disagree Strongly Disagree Don't Know {"my child has not been bullied"=>66, "strongly agree"=>10, "agree"=>6, "disagree"=>5, "strongly disagree"=>3, "dont know"=>9} UNLOCK Figures based on 172 responses up to 20-12-2023 Strongly Agree Agree Disagree Strongly Disagree Don't Know {"strongly agree"=>70, "agree"=>24, "disagree"=>5, "strongly disagree"=>1, "dont know"=>0} UNLOCK Figures based on 172 responses up to 20-12-2023 I Have Not Raised Any Concerns Strongly Agree Agree Disagree Strongly Disagree Don't Know {"I have not raised any concerns"=>31, "strongly agree"=>41, "agree"=>17, "disagree"=>3, "strongly disagree"=>5, "dont know"=>1} UNLOCK Figures based on 172 responses up to 20-12-2023 Strongly Agree Agree Disagree Strongly Disagree Don't Know {"strongly agree"=>65, "agree"=>9, "disagree"=>0, "strongly disagree"=>17, "dont know"=>9} UNLOCK Figures based on 23 responses up to 20-12-2023 Strongly Agree Agree Disagree Strongly Disagree Don't Know {"strongly agree"=>77, "agree"=>16, "disagree"=>2, "strongly disagree"=>1, "dont know"=>3} UNLOCK Figures based on 172 responses up to 20-12-2023 Strongly Agree Agree Disagree Strongly Disagree Don't Know {"strongly agree"=>54, "agree"=>40, "disagree"=>2, "strongly disagree"=>1, "dont know"=>4} UNLOCK Figures based on 172 responses up to 20-12-2023 Strongly Agree Agree Disagree Strongly Disagree Don't Know {"strongly agree"=>56, "agree"=>34, "disagree"=>3, "strongly disagree"=>1, "dont know"=>5} UNLOCK Figures based on 172 responses up to 20-12-2023 Strongly Agree Agree Disagree Strongly Disagree Don't Know {"strongly agree"=>55, "agree"=>33, "disagree"=>10, "strongly disagree"=>2, "dont know"=>0} UNLOCK Figures based on 172 responses up to 20-12-2023 Strongly Agree Agree Disagree Strongly Disagree Don't Know {"strongly agree"=>63, "agree"=>33, "disagree"=>2, "strongly disagree"=>1, "dont know"=>2} UNLOCK Figures based on 172 responses up to 20-12-2023 Strongly Agree Agree Disagree Strongly Disagree Don't Know {"strongly agree"=>52, "agree"=>35, "disagree"=>5, "strongly disagree"=>2, "dont know"=>6} UNLOCK Figures based on 172 responses up to 20-12-2023 Yes No {"yes"=>95, "no"=>5} UNLOCK Figures based on 172 responses up to 20-12-2023 Responses taken from Ofsted Parent View Register to add photos, news and download your Certificate of Excellence 2024/25 *Official school administrator email protected (eg ). Details will be verified by Ofsted. Questions? Email We're here to help you! school to add information for parents. A member of the School Guide team will verify your details within 2 working days and provide further detailed instructions for setting up your School Noticeboard. For any questions please email What is it like to attend this school? This is an exceptional school where pupils flourish. The school has the highest expectations for what pupils can achieve. Teachers encourage their pupils to aim high in their aspirations. Pupils in the school rise to these expectations at every opportunity. Pupils take great pride in the school, and their behaviour is impeccable. They work hard in lessons and follow the instructions of teachers carefully. Pupils' views are taken into account and play an important part in developing the school. For example, leaders discussed changes to the behaviour policy with the pupil-led academy council. The school curriculum is broad and ambitious. Teach...ers build on and deliver the trust-wide curriculum with considerable subject skill and expertise. Leaders ensure that pupils have ample time to develop their knowledge in the English Baccalaureate suite of subjects of English, mathematics, science, languages and humanities. Leaders organise an extensive range of enrichment clubs on a Thursday and Friday, which all pupils attend as part of the extended school day. Pupils take on roles of responsibility in school and the local community and carry them out very seriously. The school offers pupils a range of leadership opportunities. All pupils in Year 8 take part in a social action project. Pupils in Years 9 and 10 engage in supporting the local community through the school's 'Altruism programme'. What does the school do well and what does it need to do better? The school curriculum builds pupils' knowledge and skills over time. Teachers have carefully thought about the order in which they teach subject content. In science, for example, teachers introduce scientific methods alongside subject knowledge. This allows pupils to deepen their learning through practical examples. Teachers are experts in the subject they teach. They present learning clearly. Teachers help pupils to build links between different pieces of knowledge. They help pupils to become independent and resilient learners. As a result, pupils have the confidence to attempt work that significantly challenges them. Teachers are highly skilled at measuring pupils' successes. They routinely check what pupils know before moving on with new work. Teachers routinely use assessment well to measure the impact of teaching. The school swiftly identifies pupils with special educational needs and/or disabilities (SEND). Teachers and support staff have the knowledge and skills to support pupils with SEND to excel. The school places great emphasis on the importance of reading. Pupils read widely from a diverse range of authors and texts. Pupils have dedicated time for group reading in class. Subject teachers take every opportunity to develop the literacy skills of pupils further. Pupils who are weaker readers or who are learning to speak English as an additional language receive expert help to catch up. The school teaches personal, social and health education as part of its 'Values and Character' curriculum. All pupils take part in weekly debates about current affairs, such as the use of artificial intelligence. They learn about a wide range of cultures and traditions. Teachers encourage them to be respectful of each other's differences. Pupils have high regard for the school's value of kindness. As a result, bullying and discrimination are extremely rare and never tolerated. The school has a sharp focus on raising attendance rates. Leaders work tenaciously with families to develop pupils' positive habits of regular attendance. Each year, pupils hear from many visiting speakers from diverse occupations. Pupils learn about university education from Year 7. All pupils visit at least three universities by Year 11. The range of extra-curricular clubs, including sports and music, is popular. These clubs are in addition to the timetabled enrichment clubs, which all pupils attend as part of the school day. The school also encourages pupils to attend educational residential visits abroad. For example, pupils in Year 7 visit France as part of their modern foreign language studies. Teachers are proud to work here. They appreciate the effort of school leaders and the wider school trust to reduce their workload and promote their well-being. Early careers teachers receive excellent support. The school has a thorough induction programme for staff. New staff members very quickly gain a secure understanding of the school's systems and culture. This ensures a high level of consistency in how pupils are taught and for all aspects of the school's work. Safeguarding The arrangements for safeguarding are effective. In the UK, school catchment areas play a vital role in student admissions, delineating the geographic zones from which schools draw their pupils. They ensure equitable access to education by prioritizing enrollment for students residing within designated areas, fostering community engagement and resource distribution. Catchment areas help schools manage student intake, aligning placements with local neighborhoods. By integrating schools within their surrounding communities, catchment areas promote inclusivity and facilitate the equitable distribution of educational resources. Overall, they serve as a cornerstone of the UK education system, ensuring that schools can effectively serve their local communities while managing student numbers. The catchment area for Ark Pioneer Academy is as follows: 70% pupils are from 2.36 miles 10% pupils are from 2.36 to 2.84 miles 10% pupils are from 2.84 to 3.12 miles Please create an account or log in to access all these features Talk Secondary education Active My feed I'm on I started I'm watching Saved Last hour Advanced search purelaxation - 12/01/2019 23:47 Considering this brand new school for my DS. It opens in September 2019 so she will be part of the founding year group which has its pros and cons. Another option is Queen Elizabeth girls which is established and doing well but has tired old buildings and fewer sports facilities. Extremely confused so grateful of any opinions out dthere. OP posts: NicolaStart - 13/01/2019 11:28 Tired old buildings don't matter. Have a good look through the websites for other ARK schools, for example Evelyn Grace in Brixton. Read through all the behaviour and discipline policies. They are one of the very rigid zero tolerance academy chains and it wouldn't suit me, but others love them. Quote Add post Report purelaxation - 05/03/2019 20:52 Thanks Nicola. Any other views out there? I'm torn because qe girls is improving each year but ds yd would be in the founding year of a brand new school at ark and will be taught by heads of year for a couple of years. I'm worried about the level of discipline at Ark (No talking in the corridors, no running in the playground at playtime). Both options have their pros and cons. I'd love to hear more views and opinions...need to decide by 15th March. TIA. OP posts: Quote Add post Report FanDabbyfloozy - 05/03/2019 21:37 QE girls has a swimming pool, pitches etc. I actually think it has quite a lot of sports facilities. It does very well in GCSEs, the head is inspirational and its value add is very strong. It's a school on the far up sure. The only consideration is that the A Levels aren't that strong yet but that's perhaps because so many move into other options including Woodhouse. I think QEG is the surer bet this year anyhow. Quote Add post Report purelaxation - 05/03/2019 23:06 Thanks for your insights fandabby. Have you seen an ark school in action? Qe is increasing its intake this year so class sizes will increase. The head at Ark pioneer is also inspirational and a very strong character. They are rigorous with their recruitment and I am confident that they attract and recruit strong teachers. I think in a couple of years it might be highly sought after. Almost like a private school with facilities to match. My biggest concern is how well an independent thinker with a supportive family will fit into such a rigid system. OP posts: Quote Add post Report Kiranshah471 - 06/03/2019 20:34 We are in the same situation, very confused. But not a lot of people seem to be talking about the Ark School. Quote Add post Report purelaxation - 06/03/2019 20:54 Kiran are you also weighing up both qe and ark? Which are you leaning towards and why? Would be interested to hear as many points of view as possible. I know my DS will fit in well at QE and be happy there. However selfishly I face the fear of missing out on Ark if it does turn out as outstanding as it sounds. OP posts: Quote Add post Report Kiranshah471 - 07/03/2019 07:48 Hi Purelaxatpin. I am pulled between Ark and St Andrews the Greek School. Both are equally good. I feel the same am I gona miss out on this opportunity. But my worry is how strict they are, and the schools finishing times. As we are near Southgate my child will not get home till 5.30. If she went St Andrews she will home in 10 minutes. I am also concerned about the altar rigid behaviour policy and sanction for not behaving appropriately will it destroy the individual of a person. Have you had the behaviour policy of the Ark Academy. Quote Add post Report Newsletters you might like Kiranshah471 - 07/03/2019 07:54 Any my older daughter has been through QE girls and left 3 years ago after GCSE. Generally a good school, but they had their own issues. I hope that the new head teacher has resolved them. Quote Add post Report purelaxation - 07/03/2019 08:09 I share your concerns. I think children deserve respect and the freedom to be themselves and feel like ark may be stifling. Agree with you on journey time..it will be a long day for your child..However other aspects of ark are super impressive..it almost feels like a private school without the liberalism. OP posts: Quote Add post Report purelaxation - 07/03/2019 08:11 The rules and regs are definitely a big deal...I'm sure the kids will quickly get used to it. I want my kids to look back on their education fondly and not view it as a stressful experience...so many pros and cons. Please anyone else with views/opinions on Ark pioneer or ark schools in general...Please share! OP posts: Quote Add post Report Return2thebasic - 07/03/2021 21:35 Bump. Anyone who has real experience with Ark can comment please? Very keen to know more, as we live very close and want to know if this is a viable option. Quote Add post Report Irishparent - 25/03/2021 20:54 Ark are superb. My son goes there. Only 2 year groups in, but so professional, well organised and academic. Have a daughter at QE girls. It's OK, but so mindfulness and woke oriented and were woeful over lockdown. My younger daughter will be going to ark as well. Quote Add post Report My DD just had an offer from Ark - shes nervous so its good to know your feedback and glad to hear your son is enjoying it. Quote Add post Report Newsletters you might like sammynine - 20/04/2021 18:33 @Irishparent Ark are superb. My son goes there. Only 2 year groups in, but so professional, well organised and academic. Have a daughter at QE girls. It's OK, but so mindfulness and woke oriented and were woeful over lockdown. My younger daughter will be going to ark as well. What does woke oriented even mean? Quote Add post Report Irishparent - 20/04/2021 22:26 Oriented towards a focus on liberal identity and social issues versus a strong academic focus. Quote Add post Report sammynine - 20/04/2021 22:32 @Irishparent Oriented towards a focus on liberal identity and social issues versus a strong academic focus. So QE Girls is like that? Are you sure. My sister went there and it wasn't like that at all! How are they focused on social issues Quote Add post Report Irishparent - 21/04/2021 16:53 Yep. They are. Focus and priorities are not academic. I think it's displacement activity so they don't have to push themselves or the girls academically. Quote Add post Report Kiranshah which school did you end up with please? Does anyone else have feedback re QE Girls vs Ark Pioneer? Quote Add post Report purelaxation - 28/04/2021 23:05 My DS is at QE. It's extremely poor educationally. Sloppy lazy teaching (watching videos and answering questions on them) for multiple subjects. PE is walking around the field. Agree with the comment that they're hiding behind wellbeing objective to avoid focus on academics. Utterly regret not going for Ark. Many friends are extremely happy with it as are their kids. My DS has a lovely friends circle making it difficult to pluck her out. Don't make the same my mistake. Go for Ark 100pc. OP posts: Quote Add post Report sammynine - 29/04/2021 00:18 @purelaxation My DS is at QE. It's extremely poor educationally. Sloppy lazy teaching (watching videos and answering questions on them) for multiple subjects. PE is walking around the field. Agree with the comment that they're hiding behind wellbeing objective to avoid focus on academics. Utterly regret not going for Ark. Many friends are extremely happy with it as are their kids. My DS has a lovely friends circle making it difficult to pluck her out. Don't make the same my mistake. Go for Ark 100pc. Wow this is sad to hear The grades are very high, one of the highest in Barnet but this may be down to smart kids perhaps with tutors? Quote Add post Report purelaxation - 29/04/2021 05:40 I've really no idea how the grades are achieved. It's a mixed demographic with v mixed abilities. Parents will definitely need to be on the ball due to the many gaps to be filled. Homework virtually non existent (5 mins on days it's given) even when physical school is on. Remote learning is cameras off when other state schools have cameras on to check the kids arev engaged. Any points raised with senior leadership are basically ignored. Utterly shocking and disappointing. Quote Add post Report wow thats interesting feedback - Pure do you mind if i private message you please Quote Add post Report gigglesgiggles - 29/09/2022 20:46 I know that this is an old thread but I was wondering whether anyone had any other experience of Ark Academy that they could share. I like the school but I'm concerned about the level of discipline there. Quote Add post Report sumer1 - 23/02/2024 12:50 Hi all just to give you an update. My daughter eventually joined Ark Pioneer back in 2012 and now is in Year 9. Its an amazing school and i am so happy with my decision. Shes doing really well, a very focused school, good discipline and very professional. I wanted to share the feedback as i was so confused which school to go for. It has a recent outstanding Ofsted rating too. Quote Add post Report Active My feed I'm on I started I'm watching Saved Last hour Advanced search Please create an account To comment on this thread you need to create a Mumsnet account. Swipe left for the next trending thread Active Watching Add post I'm on Search Play today's Sudoku Play today's Codeword Play today's Guessword Play today's Crossword Play today's Numberfit ARK John Archer Primary AcademyPlough Road, Battersea, London, SW11 2AA Ark AcademyForty Avenue, Wembley, Middlesex, HA9 9JR Ark Acton AcademyGunnery Lane, Acton, London, W3 8EY Ark Alexandra AcademyPark Avenue, William Parker Campus, Park Avenue, Hastings, East Sussex, TN34 2PG Ark All Saints Academy140 Wyndham Road, Camberwell, London, SE5 0UB Ark Atwood Primary AcademyAmberley Road, Westminster, London, W9 2JY Ark Ayrton Primary AcademySomers Road, Southsea, Portsmouth, Hampshire, PO5 4LS Ark Bentworth Primary AcademyBentworth Road, Westway, London, W12 7AJ Ark Blacklands Primary AcademyOsborne Close, Freshwater Avenue, Hastings, East Sussex, TN34 2HU Ark Blake AcademyMorland Road, Croydon, CR0 6NA Ark Bolingbroke AcademyWakehurst Road, London, SW11 6BF Ark Boulton AcademyGolden Hillock Road, Sparkhill, Birmingham, West Midlands, B11 2QG Ark Brunel Primary AcademyMiddle Row, London, W10 5AT Ark Burlington Danes AcademyWood Lane, London, W12 0HR Ark Byron Primary AcademyThe Vale, Acton, London, W3 7JT Ark Castledown Primary AcademyPriory Road, Hastings, East Sussex, TN34 9QT Ark Charter AcademyHyde Park Road, Southsea, Hampshire, PO5 4HL Ark Conway Primary Academy60 Hemlock Road, Hammersmith, London, W12 0QT Ark Dickens Primary AcademyTurner Road, Portsmouth, Hampshire, PO1 4PN Ark Elvin AcademyCecil Avenue, Wembley, Middlesex, London, Middlesex, HA9 7DU Ark Evelyn Grace Academy255 Shakespeare Road, Lambeth, London, SE24 0QN Ark Franklin Primary AcademyHarvist Road, London, NW6 6HJ Ark Globe AcademyHarper Road, London, SE1 6AG Ark Greenwich Free School403 Shooters Hill Road, London, SE18 4LH Ark Isaac Newton Academy1 Cricklefield Place, Ilford, Essex, IG1 1FY Ark John Keats AcademyBell Lane, London, EN3 5PA Ark King Solomon AcademyPenfold Street, London, NW1 6RX Ark Kings AcademyShannon Road, Kings Norton, Birmingham, West Midlands, B38 9DE Ark Little Ridge Primary AcademyLittle Ridge Avenue, St Leonards-on-Sea, East Sussex, TN37 7LR Ark Oval Primary Academy98 Cherry Orchard Road, Croydon, Surrey, CR0 6BA Ark Priory Primary AcademyActon Lane, London, W3 8NR Ark Putney AcademyPulman Gardens, Putney, London, SW15 3DG Ark Soane AcademyGunnery Lane, Ealing, London, W3 8EA Ark St Alban's AcademyConybere Street, Birmingham, West Midlands, B12 0YH Ark Tindal Primary AcademyTindal Street, Balsall Heath, Birmingham, West Midlands, B12 9QS Ark Victoria AcademyTalbot Way, Small Heath, Birmingham, West Midlands, B10 0HJ Ark Walworth AcademyShorncliffe Road, London, SE1 5UJ Ark White City Primary Academy3 Ecdity Walk, Ecdity, London, W12 7PT Page 2 Ofsted homepage URN: 2780363 Address: Ark Pioneer Academy, Westcombe Drive, Barnet, EN5 2BE Academic Progress: Pupils achieve high expectations and flourish academically. Behaviour and Attitudes: Pupils' behavior is impeccable with high aspirations. Qualifications and Training: Teachers are experts in their subjects. Current Educational Practices: Teachers frequently update their methods to ensure effective learning. Strengths and Challenges: Teachers are proud and well-supported by leadership. Opportunities for Involvement: Parents can provide feedback via Ofsted Parent View. Communication: School communicates effectively about pupils' progress. Handling Conflicts and Concerns: Leaders address concerns through pupil-led councils. Actions for Quality Improvement: Consistent emphasis on curriculum and staff training. Managing Bullying and Safety: Bullying is extremely rare and not tolerated. Promoting Welfare and Safety: School promotes kindness and safety effectively. Extracurricular Offerings: Extensive range of enrichment clubs organized. Balancing Academics and Extracurriculars: Enrichment clubs are part of the extended school day. Career Counselling Services: Yearly career talks and university visits. Preparation for Sixth Form: From Year 7, pupils engage in university education. Managing and Supporting SEND: Swift identification and support for pupils with SEND. Subjects Offered: Broad curriculum including English Baccalaureate subjects.