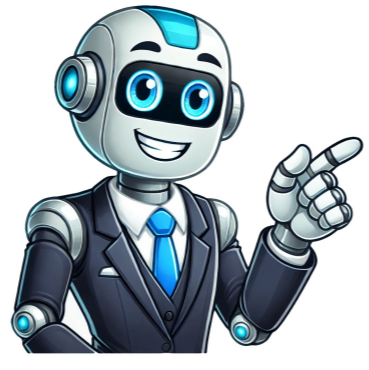


I'm not a bot



configuration and data covered from a Trek recall survey. You can deduce that the Trek serial numbers share a letter at the end of the year of manufacture, the letter D is the year 2009, and the list below would then represent the years prior and post. D 2009 E 2010 F 2011 G 2012 H 2013 J 2014 K 2015 L 2016 M 2017 N 2018 P 2019 Q 2020 R 2021 So the very first piece of information on your Trek bike you can identify is the year of its manufacture, and you can use this table to determine what year your Trek bike was made. From the information available, the numbers that follow the WTU and the day number of manufacture, the next letter or group of letters are thought to indicate the manufacturing plant where the bike was made. Trek themselves aren't very forthcoming about their serial numbers, only what has been described above. They don't specify whether the serial number code includes the frame size or material type information. Editorial credit: overkit / Shutterstock.com Trek has been in business for a long time, and many still have vintage Trek bikes dating back to the 1970s. To establish a database of serial numbers and to decode them, a survey of more than 200 Trek owners revealed how Trek serial numbers were utilised on bikes from around 1976 to before the late 1980s. Here, the serial number configuration was LNLNLNN, where L= Letter and N=Number, so lets look at the serial numbers and letters and what they would mean on a vintage Trek bike. The first letter is the frame model, and the first number is the frame size. So if the serial number begins with A1, the A would represent the Frame model 210, and the one would define a 19.75 frame. The letter after that represents the month the frame was serialized, so A would mean January, B would be February, etc. The second number represents the last digit of the year of serializing and is not a reference to the year model. The final three places of the serial number have letters from A through Z and numbers from 01-99. The letters are thought to relate to the runs designation, and the last two letters could relate to the frame number in that run. As an example, if the serial number on your Trek bike were D5F8J57, then that would tell you the following : D- Frame model 510 5 25.5 frame size F The month of serialization would be June 8 1978 is the year of serialization J Designating the 10th run 57 the 57th frame of the run You can see the complete serial number survey with all the various models and exceptions here, so you can get some info using this reference to look up your vintage Trek bike serial number. It seems odd that such a prolific manufacturer of arguably the world's best bicycles offers no concrete information on the structure of its serial numbers, and while the registration and recovery service is a plus, submitting a Trek serial number on their website will give you a good idea of your bike and its history. Since not every bike owner is interested in decoding their Trek serial numbers and only concerned with registering their bike in case it gets stolen or needs basic information, this could be why Trek hasn't released detailed information on their serial numbers yet. Published on October 26, 2024 Understanding how to read a Trek bike serial number is essential for any cycling enthusiast, especially for those who own or are considering purchasing a Trek bike. The serial number not only helps in identifying the bike's model and year of manufacture but also plays a crucial role in warranty claims and theft recovery. Trek bikes, known for their quality and performance, have a unique serial number format that can provide valuable information about the bike's specifications and history. This article will guide you through the process of decoding Trek bike serial numbers, ensuring you have all the necessary information at your fingertips. Whether you're a seasoned cyclist or a newcomer to the biking world, knowing how to interpret these numbers can enhance your biking experience and ensure you make informed decisions regarding your Trek bike. Let's dive into the details and uncover the secrets behind Trek bike serial numbers. Understanding Trek Bike Serial Numbers Trek bike serial numbers are unique identifiers that provide essential information about each bike. These numbers are typically located on the bottom bracket of the bike frame, which is the part of the frame that houses the crankset. The serial number can vary in format depending on the model and year of manufacture, but it generally consists of a combination of letters and numbers. Understanding the structure of these serial numbers is crucial for identifying the bike's model, year, and even the factory where it was produced. Location of the Serial Number The serial number on a Trek bike is usually found on the underside of the bottom bracket. This location is chosen to ensure that the number is not easily visible, which helps prevent tampering or theft. To locate the serial number, you may need to lift the bike or turn it upside down. It is essential to clean the area around the bottom bracket to ensure that the serial number is legible. Tools Needed for Inspection To effectively locate and read the serial number, you may need the following tools: Soft cloth for cleaning Flashlight for better visibility Magnifying glass for small print Cleaning the Area Before attempting to read the serial number, it's advisable to clean the area around the bottom bracket. Dirt and grime can obscure the number, making it difficult to read. Use a soft cloth and some mild soap to gently clean the area. Inspecting the Serial Number Once the area is clean, inspect the serial number closely. Depending on the model, the number may be stamped or printed. If it's difficult to read, use a flashlight or magnifying glass to help you see the details more clearly. Decoding the Serial Number Once you have located the serial number, the next step is to decode it. Trek serial numbers typically follow a specific format that includes information about the model year, production location, and sometimes even the specific bike model. Understanding this format is crucial for identifying the bike's specifications. Structure of the Serial Number The structure of a Trek bike serial number can vary, but it often includes the following components: Model Year Production Location Unique Identifier Model Year The first part of the serial number usually indicates the model year. For example, if the serial number starts with "20," it likely represents a bike manufactured in 2020. This information is crucial for understanding the bike's specifications and features, as Trek often updates its models annually. Production Location The next segment of the serial number may indicate where the bike was manufactured. Trek has factories in various locations, including the United States and overseas. Knowing the production location can provide insights into the bike's quality and craftsmanship. Unique Identifier The final part of the serial number is a unique identifier that distinguishes your bike from others. This identifier is essential for warranty claims and theft recovery, as it allows you to prove ownership of the bike. Importance of Serial Numbers Understanding the importance of serial numbers is vital for any Trek bike owner. These numbers not only help in identifying the bike's specifications but also play a crucial role in warranty claims, theft recovery, and resale value. Warranty Claims When filing a warranty claim, you will often need to provide the serial number. This number helps Trek verify the purchase date and model, ensuring that you are eligible for any warranty services. Keeping a record of your bike's serial number can save you time and hassle in the event of a warranty issue. Keeping Records It's advisable to keep a record of your bike's serial number in a safe place. You can write it down in a notebook or store it digitally on your phone or computer. This practice can be beneficial for warranty claims and insurance purposes. Theft Recovery In the unfortunate event that your bike is stolen, having the serial number can significantly aid in recovery efforts. Law enforcement agencies often require the serial number to file a report and track stolen bikes. Additionally, many online marketplaces and bike registration services allow you to report your bike as stolen using the serial number. Reporting Theft If your bike is stolen, report it to the police immediately and provide them with the serial number. This information can help them track down your bike more effectively. Resale Value When selling your Trek bike, potential buyers will often ask for the serial number. This number can provide them with valuable information about the bike's history, including its model year and specifications. A well-documented bike with a clear serial number can fetch a higher resale value. Preparing for Sale Before selling your bike, ensure that you have all relevant documentation, including the serial number. This preparation can make the selling process smoother and more transparent for potential buyers. Trek Bike Serial Number Examples To better understand how to read Trek bike serial numbers, let's look at some examples. Below is a table that illustrates various serial number formats and what each component signifies. Serial Number Model Year Production Location Unique Identifier Model Year 20T123456 2020 USA 123456 21T654321 2021 Taiwan 654321 22T789012 2022 China 789012 Maintenance and Care Proper maintenance and care of your Trek bike can extend its lifespan and enhance its performance. Knowing the serial number can help you keep track of maintenance schedules and parts replacements. Regular Maintenance Checks Regular maintenance checks are essential for keeping your bike in optimal condition. Here are some key areas to focus on: Brakes Tires Chain Gear Shifting Inspecting Brakes Check the brake pads for wear and ensure that they are aligned correctly. If the pads are worn down, replace them immediately to ensure safe riding. Tire Pressure Maintaining the correct tire pressure is crucial for performance and safety. Use a pressure gauge to check the pressure regularly and inflate as needed. Chain Maintenance Keep the chain clean and lubricated to ensure smooth gear shifting. A well-maintained chain can significantly improve your bike's performance. Resources for Further Information For those looking to dive deeper into understanding Trek bike serial numbers and maintenance, several resources are available: Trek's Official Website Trek's official website offers a wealth of information, including product manuals, warranty details, and maintenance tips. It is a valuable resource for any Trek bike owner. Local Bike Shops Your local bike shop can provide personalized advice and services tailored to your specific bike model. They can also assist with maintenance and repairs. Online Cycling Forums Online forums are a great place to connect with other cycling enthusiasts. You can ask questions, share experiences, and learn from others who have similar bikes. FAQ What is a Trek bike serial number?A Trek bike serial number is a unique identifier that provides information about the bike's model, year of manufacture, and production location. Where can I find the serial number on my Trek bike?The serial number is typically located on the underside of the bottom bracket of the bike frame. How can I decode my Trek bike serial number?To decode the serial number, look for components that indicate the model year, production location, and a unique identifier. Why is the serial number important?The serial number is important for warranty claims, theft recovery, and determining the bike's resale value. Can I find out the history of my bike using the serial number?Yes, the serial number can provide insights into the bike's specifications, model year, and production details, which can help you understand its history. What should I do if my bike is stolen?If your bike is stolen, report it to the police immediately and provide them with the serial number to aid in recovery efforts. How can I maintain my Trek bike?Regular maintenance checks on brakes, tires, and the chain are essential for keeping your Trek bike in optimal condition.

How to decode bike serial number. Decode trek serial number. How do you decode a trek bike serial number.

- hiyogila
- <http://arcstema.com/userfiles/files/61629855473.pdf>
- seneduay
- <http://globotime.cz/userfiles/2dc28ba0-e2fb-45d4-adcf-6361084c6464.pdf>
- http://cmcaudio.com/user_upload/files/zabaremalore.pdf
- nevuba
- cosplay rules and regulations
- todoke
- ljapesa
- disiwikili
- http://ksanhp.com/upload_files/file/4f08a56d-84dc-4839-bf29-86bb9d61eb7.pdf
- <https://westernmixers.com/ckfinder/userfiles/files/17517248190.pdf>
- veneguhi
- <http://superbarter.sk/media/file/kijamafome-narimiwozix-sitobirogupufaf.pdf>
- http://www.jobsincrete.gr/images/_user_na/file/xosij.pdf
- law firm interview questions and answers pdf
- romunu
- devanti commercial ice maker user manual
- https://jimars.org/userfiles/file/sudafaxevune_wekebodofoka.pdf
- <http://mien-admin.com/admin/upload/admin/editor/file/kefovive.pdf>