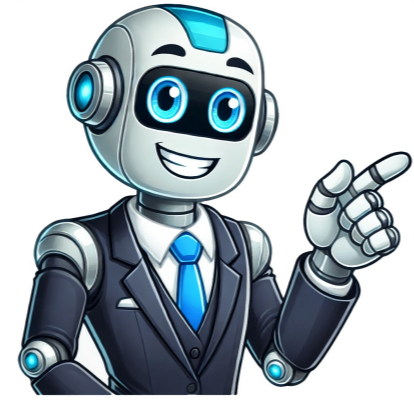


Click to verify



your phone. See also: How To Get Rid Of Samsung App Pairs/Why Are Apps Not Showing On Home Screen? One possible reason why you may have 2 settings apps in Android is if Dual app mode is enabled. Dual app mode, also known as dual messenger mode, is used to run two versions of the same messenger application on a device at a time. It is also known as 'app clone' or 'app twinning' on some devices. This mode is often used for running two different Whatsapp accounts on a same device. To activate or deactivate dual application mode: Go to 'Settings > Advanced settings' Here you can toggle dual mode on or off. See also: How To Remove Default Messaging App On Android? You may also see an extra Settings application on your Android if you have created a shortcut for the application. To create a shortcut for an application, hold the application's widget for a few seconds and place it at the desired location. To remove an app shortcut: Hold the shortcut for a few seconds,Wait for the bin icon to appear at the top of the screen,Drag and drop the shortcut icon into the bin. A partition in an Android device means creating a separate storage location or region to manage it independently. It is sometimes referred to as parallel storage. Sometimes, a partition is created in an Android device when you encrypt your memory card. It causes the Android device to treat the SD card independently, hence showing a second Settings app. You can get rid of the extra Settings application by decrypting your SD card. To do so: Go to 'Settings > Biometric & security' Scroll down and find 'Decrypt SD card' Tap on the 'Decrypt SD card' button Enter your device password The decryption process will start. Wait for the process to complete. Your SD card will be decrypted. Additionally, if you have a 'Secure Folder' in your device, it may also create two Settings applications. If your phone has 2 Android setup apps, it's likely due to dual-app or app cloning being activated on your Android device. It may also be because your phone is running on parallel storage. Android setup is a system application that sets up your new device. It provides a wizard to follow a series of steps to initiate the device. Android setup also runs after factory reset and requires an internet connection to work. You can get rid of extra Android setup by deactivating the dual app mode. To do so: Go to 'Settings > Advanced settings' Tap on the 'Dual messenger' Dual app mode will be deactivated. See also: How To Get Rid Of Android Setup Notifications? You have 2 Facebook apps on your phone because you might have enabled dual messenger mode on your mobile. It may also be because you have installed two different versions of the Facebook application, i.e., normal app, lite, or beta. It may also be because your device is running parallel storage. Facebook provides multiple versions of its applications. These applications can be downloaded simultaneously on your device. If you have downloaded two versions of the same application on your phone, you will see two different Facebook apps within your application listing. You can check for multiple versions of the Facebook application by following these steps: Scroll down and find the Facebook application(s). You can also search 'Facebook' using the search barSee if you have multiple Facebook apps You can uninstall the extra application by tapping on the 'undesired' Facebook app and tapping 'Uninstall'. You may also have two Facebook apps on your Android if you used Facebook in your browser and allowed browser notifications for that website. or may also see two Facebook apps on your device if your device is running on dual app mode or partitions. To turn off these modes, see the first section of this article. You may have 2 Phone apps on an Android device if dual app mode or app cloning is active on your device. It may also result from having downloaded a third-party dialer app on the phone. You may also see a duplicate phone app if your device has parallel storage or partitioning. See "Cause 3: Android partition" above. If you do not have a secondary partitioning, then check for any third-party dialer application. To do so, go to 'Settings > Application' and look for an additional dialer app. You can uninstall the secondary application by tapping the 'Uninstall' button. Dual-app mode in Android allows you to run two instances of the same applications on your phone. It is also known as dual messenger mode as it allows running multiple instances of Messenger . Dual app setting is named differently in devices form different manufacturers, e.g., app cloning or app twinning. The dual-mode feature is useful if you want to run and manage multiple social media accounts simultaneously. Each cloned application has its own independent data and settings. However, if you uninstall the original application, this will also delete the cloned application. On the other hand, deleting the cloned instance of the application does not affect the original application. See also: How Do You Delete Recent Apps On Android? To get rid of dual apps on your Samsung, uninstall the cloned applications. You can also turn off dual application mode or app cloning. To uninstall a cloned/dual app, follow these steps: Go to Settings > AppsScroll down to find the duplicate applicationsTap on any duplicate appTap 'Uninstall' The dual app will be deleted from your device. To turn off the dual app mode: Go to Settings > Advanced settings Tap on the 'Dual Messenger' You can remove duplicate apps on your Android by turning off the dual-app mode or removing the partitioning from your Android. Partition in Android devices occurs due to encrypting the SD card. You can decrypt the SD card using the following steps: Go to 'Settings > Biometric & security' Scroll down and find 'Decrypt SD card' Tap on the 'Decrypt SD card' buttonEnter your device password to verify it is youWait for the decryption process to complete Your SD card will be decrypted and the partition will dissolve. See "Cause 3: Android partition" above for more details. See also: Why Do My Apps Randomly Install? To turn off the second WhatsApp, turn off dual messenger mode or app cloning for WhatsApp. You can also uninstall the second WhatsApp. To turn off dual-app mode, refer to the section How do I get rid of dual Apps on my Samsung? To turn off WhatsApp cloning, follow these steps: Go to 'Settings > Advanced settings' Tap on the 'Dual messenger' Scroll down to find WhatsAppToggle off WhatsApp cloning Your second WhatsApp application will be removed. You can also uninstall the cloned WhatsApp Go to to Settings > Application > WhatsApp, Tap on the second WhatsAppTap 'Uninstall'. See also: Will I Lose My WhatsApp Conversations If I Change My Phone Number? If you have two Chrome apps on your Android phone, it's likely due to dual-app mode being enabled or because you've created a shortcut for the application. To deactivate the dual-app mode, check out the preceding section. If you have created a shortcut widget for the Chrome app, you can remove it through these steps: Go to the extra Chrome app icon and long-press on itThe bin icon appears at the top of the screen drag and drop the Chrome icon onto the bin The extra app will be removed. You have two Google apps on your phone because you might have activated the dual-app mode or created a shortcut for the application. It may also be because you have run the Google application from another browser and allowed notifications. You can remove the Google app shortcut by following these steps: Go to the extra Google app icon and long-press itWhen the bin icon appear on the screen top, drag and drop the Chrome icon onto it The extra app will be removed. If you have allowed Google permission on some other browser, you can stop it by clearing the cache of that browser. To do so: Go to Settings > AppsScroll down and select the browser appT 'Clear cache'Confirm Your browser notifications will be cleared. Rest assured that pinning Chrome to your taskbar can help Browsers > Chrome 3 min. read Updated on October 4, 2023 updated on October 4, 2023 Readers help support Windows Report. We may get a commission if you buy through our links. Read our disclosure page to find out how you help Windows Report sustain the editorial team. Read more Key notes Getting two Chrome icons on the taskbar can be frustrating as well as time-consuming. As users report not being able to unpin one of the icons from the taskbar, we gathered a few fixes in this article. If you keep having issues with double Chrome icons, perhaps it would be best to switch to a new, better browser. Some users have reported having a duplicate Chrome icon on their taskbar in Windows 10/11. This can become extremely frustrating in time, as the space available in the taskbar is limited. Here's how one user described the issue on Microsoft Answers forums: Double Google Chrome icon on the taskbar. I've tried to unpin the first one on the left, and then pin the new one on the right, but I can't pin that one because there is no option to pin it. If you can, please help me! For these reasons, in this article, we will explore some of the best-proven methods to solve this issue and clear your taskbar from any unwanted icons. Read on to find out how to do it. It is conceivable that you have pinned the app's shortcut rather than the program itself if you are seeing multiple icons in the taskbar. If this is the case, you will need to unpin the shortcut. Therefore, when you activate the application, you will see that there is a duplicate icon in the taskbar. This is because Windows believes there are two distinct instances of the program now active.Now, let's see in more detail how you can remove two Chrome icons from your taskbar. Follow along! If you keep having trouble with Chrome, try another browser instead. We recommend Opera One because it offers a similar user experience and is compatible with all Chrome extensions. The browser is heavily optimized for user privacy and doesn't store tracking cookies or your personal info. It comes with a built-in VPN, an ad blocker, social media integrations, and more. Opera One Have an error-free experience on the web with this reliable browser. Open up File Explorer then copy-paste this location into your explorer. Note, if you can't see the AppData folder, check out how to show hidden folders in Windows 10: C:\Users\your_username here/AppData/Roaming/Microsoft/InternetExplorer/QuickLaunch/UserPinned/TaskBarLaunch Chrome and pin it to your taskbar. This way you will also fix the Chrome opens new icon on taskbar issue. To fix the Google Chrome taskbar duplicate issue, open Google Chrome then right-click the icon that is not active.Select Unpin from taskbar.Right-click on the other icon and select Pin to taskbar. Read more about this topic Right-click on each of the Chrome icons and select Unpin from taskbar.Click on the Start menu and search for Google Chrome.Drag and drop Google Chrome to your Desktop.Double-click the shortcut from your Desktop to open ChromeRight-click the Chrome icon and select Pin it to Taskbar. In this article, we explored the best-proven methods to solve having two Google Chrome icons on your taskbar. Please follow the methods presented in this article in the order that they were written to avoid any other issues. Moreover, we recommend that you take a look at what to do if the Windows 11 Taskbar is empty. Feel free to let us know if this guide helped you solve your problem by using the comment section found below. More about the topics: browser Milan Stanojevic Windows Troubleshooting Expert Milan has been enthusiastic about technology ever since his childhood days, and this led him to take interest in all PC-related technologies. He's a PC enthusiast and he spends most of his time learning about computers and technology. Before joining WindowsReport, he worked as a front-end web developer. Now, he's one of the Troubleshooting experts in our worldwide team, specializing in Windows errors & software issues. Reddit and its partners use cookies and similar technologies to provide you with a better experience. By accepting all cookies, you agree to our use of cookies to deliver and maintain our services and site, improve the quality of Reddit, personalize Reddit content and advertising, and measure the effectiveness of advertising. By rejecting non-essential cookies, Reddit may still use certain cookies to ensure the proper functionality of our platform. For more information, please see our Cookie Notice and our Privacy Policy. macOS / Earlier Operating Systems When I hover over my icons the Google icon literally shows as "Google Chrome 2". (just started happening). At times, I've noticed two windows will open simultaneously, but sometimes can't access the 2nd window. I noticed if I close the one window the other will close automatically. In general, I close all windows daily and clear all history daily, so I have nothing open. I also checked applications to confirm I only have one Google app loaded. Why is this happening? Is it a virus? How do I get rid of it? I'm an Apple newbie and appreciate any assistance that can be provided!! MacBook Pro with Touch Bar Posted on Mar 26, 2020 10:39 AM Reply Posted on Mar 27, 2020 1:13 PM Hi IBAWEE1,Thanks for using Apple Support Communities! I see you have a question about Google Chrome, and I'd like to help you get to the right place for assistance.Google Chrome is not an Apple app. I did find the Google Chrome Help site, which can hopefully get you started finding a solution. Google Chrome HelpI can provide you with instructions on how to reinstall an app, if you need to delete and reinstall.Install and reinstall apps purchased from the App Store on MacTake care! Page content loaded Mar 27, 2020 1:13 PM in response to IBAWEE1 Hi IBAWEE1,Thanks for using Apple Support Communities! I see you have a question about Google Chrome, and I'd like to help you get to the right place for assistance.Google Chrome is not an Apple app. I did find the Google Chrome Help site, which can hopefully get you started finding a solution. Google Chrome HelpI can provide you with instructions on how to reinstall an app, if you need to delete and reinstall.Install and reinstall apps purchased from the App Store on MacTake care! This thread has been closed by the system or the community team. You may vote for any posts you find helpful, or search the Community for additional answers. WHY? "Google Chrome 2" icon In the modern digital age, Google Chrome has become one of the most popular web browsers due to its speed, simplicity, and seamless integration with the Google ecosystem. However, many users occasionally encounter an unusual issue: duplicate Google Chrome icons appearing on their taskbars. This can be both confusing and distracting, leading to questions like, "Why do I have two Google Chrome icons on my taskbar?" and "How do I fix this?" In this detailed article, we will explore the core reasons for the duplication of Chrome icons, the implications of having multiple icons, and practical solutions to rectify the situation. By the end of this piece, you will understand why this phenomenon occurs and how to effectively manage your taskbar icons. Understanding the Taskbar Icons The taskbar in Windows operating systems serves as a quick access point for applications, programs, and utilities. It allows users to open, switch, and manage various applications with ease. App icons present on the taskbar can be pinned for quicker access, and these icons represent instances of the running applications. When users notice two Google Chrome icons on their taskbar, it generally indicates that there are two distinct instances of Chrome running. This can be due to various reasons, including application settings, installation anomalies, or user preferences. Reasons for Duplicate Icons Multiple User Profiles: Google Chrome allows users to create multiple user profiles. Each profile can have its own extensions, bookmarks, and personalized settings. If you have two profiles created on the same system, each may appear as a distinct icon on your taskbar. Different Installation Locations: If you've installed Google Chrome more than once—perhaps from different sources or locations—Windows may recognize each version as a separate application. For instance, one version could be installed through the official Google website, while another could be installed via the Microsoft Store or through a third-party installer. Pinned Icons: Users often pin applications to the taskbar for quick access. If an instance of Chrome is pinned, and you subsequently open another instance of Chrome from a different source (like a shortcut on the desktop or the Start menu), it may create a second taskbar icon. Running Multiple Instances: Sometimes, users unknowingly run multiple instances of Chrome. This can be done for a variety of reasons, such as wanting to use different accounts simultaneously or for testing purposes. Corrupted Shortcut Files: Corrupted shortcut files can also lead to irregularities in taskbar behavior. If one of the Chrome icons on the taskbar is linked to a corrupted or outdated shortcut, it may display incorrectly or duplicate the application icon. Chrome Canary or Developer Editions: If you are using the regular version of Google Chrome and have installed Google Chrome Canary or a developer version alongside it, these separate installations may also show unique icons on your taskbar. Implications of Duplicate Icons Having duplicate icons may not significantly impair functionality but can lead to confusion and minor inconveniences, such as: Difficulty in Managing Windows: Users may struggle to distinguish between the two instances, leading to a cluttered workspace and inefficient window management. Resource Consumption: Running two instances of Chrome simultaneously can consume more system resources, affecting performance, especially on systems with limited hardware capabilities. Unintended Closing: Users may accidentally close one instance of Chrome, disrupting work or causing loss of unsaved data from one of the profiles. Fixing the Duplicate Icons Issue Now that we've explored the reasons behind the double icons, let's delve into practical solutions to fix the issue. Identifying and Closing Duplicate Instances: First, check if you indeed have two instances running. Right-click the taskbar and select "Task Manager." Look under the "Processes" tab for multiple entries of Google Chrome. If you see multiple instances, you can close one by selecting it and clicking "End Task." Afterward, check your taskbar to see if the duplicate icon disappears. Removing Extra Pinned Icons: If one icon is pinned to the taskbar while the other isn't but is still showing up, you can unpin it. Right-click the duplicate icon and select "Unpin from taskbar." To ensure you have the desired version, launch Chrome from wherever you want it pinned first, then pin that instance. Managing User Profiles: If you have multiple user profiles in Chrome, ensure that you're mindful of how you launch each profile. When you click on a profile icon, it may create a new instance. You might want to consolidate your browsing needs into a single profile or manage them carefully. Check Installation Locations: Verify where Chrome is installed on your system. Open the Chrome browser and click on the three dots in the upper right corner to navigate to "Help" > "About Google Chrome." If Google Chrome was installed from both the official website and the Microsoft Store, you might want to uninstall one version to reduce redundancy. Shortcut Integrity: If you suspect corrupted shortcuts, create new shortcuts for Chrome. Right-click the desktop, select "New," and then "Shortcut." Enter the path of the Google Chrome executable (usually located in C:\Program Files\Google\Chrome\Application\chrome.exe), and follow the prompts to create a new shortcut. Pin this shortcut to your taskbar. Uninstalling Extra Versions: If duplicate icons persist due to multiple installations, you can uninstall the less preferred version. Go to the control panel, navigate to "Programs and Features," and find Google Chrome. If more than one version is listed, right-click and select "Uninstall" for the version you don't need. Clear Taskbar History (Windows 10/11): Sometimes, clearing the taskbar's previous history can rectify icon issues. Right-click the taskbar and choose "Taskbar settings." Scroll down to "Notification area" and select "Select which icons appear on the taskbar." Toggle off the unnecessary applications. Using Command Prompt: If all else fails, you might opt for a command-line approach. Open Command Prompt as an administrator. Type the following commands one by one to reset Google Chrome's settings: taskkill /f /im chrome.exe del /f /q %localappdata%\Google\Chrome\User Data\Default*. * Ensure you back up any necessary data before executing permanent deletion commands. Checking for Updates: Regularly updating your applications can prevent bugs and glitches. Go to Chrome's settings and navigate to "About Chrome." Ensure that you're using the latest version, which might resolve numerous bugs, including those related to icons. Conclusion Encountering duplicate Google Chrome icons on your taskbar may initially appear trivial, but it can lead to major frustrations. By understanding the underlying reasons and applying the solutions outlined above, you can effectively manage and resolve this issue. Remember that regular maintenance of your browser, including checking for unnecessary instances, managing profiles, and uninstalling duplicates, can contribute significantly to a more streamlined and efficient browsing experience. With these approaches, you'll not only declutter your taskbar but also optimize your overall workflow, ensuring that you remain focused on what matters most—browsing effectively and efficiently in a world that demands pixel-perfect clarity in user experience.

As an Android user, you may sometimes encounter duplicate apps on your phone, e.g. a second settings app. If you have two settings apps on Android, it may be because you have activated the dual app mode on your device. It may also be because you have created a shortcut for your settings application or because you have created a partition on your phone. See also: How To Get Rid Of Samsung App Pairs/Why Are Apps Not Showing On Home Screen? One possible reason why you may have 2 settings apps in Android is if Dual app mode is enabled. Dual app mode, also known as dual messenger mode, is used to run two versions of the same messenger application on a device at a time. It is also known as 'app clone' or 'app twinning' on some devices. This mode is often used for running two different Whatsapp accounts on a same device. To activate or deactivate dual application mode: Go to 'Settings > Advanced settings' Here you can toggle dual mode on or off. See also: How To Remove Default Messaging App On Android? You may also see an extra Settings application on your Android if you have created a shortcut for the application. To create a shortcut for an application, hold the application's widget for a few seconds and place it at the desired location. To remove an app shortcut: Hold the shortcut for a few seconds,Wait for the bin icon to appear at the top of the screen,Drag and drop the shortcut icon into the bin. A partition in an Android device means creating a separate storage location or region to manage it independently. It is sometimes referred to as parallel storage. Sometimes, a partition is created in an Android device when you encrypt your memory card. It causes the Android device to treat the SD card independently, hence showing a second Settings app. You can get rid of the extra Settings application by decrypting your SD card. To do so: Go to 'Settings > Biometric & security' Scroll down and find 'Decrypt SD card' Tap on the 'Decrypt SD card' button Enter your device password The decryption process will start. Wait for the process to complete. Your SD card will be decrypted. Additionally, if you have a 'Secure Folder' in your device, it may also create two Settings applications. If your phone has 2 Android setup apps, it's likely due to dual-app or app cloning being activated on your Android device. It may also be because your phone is running on parallel storage. Android setup is a system application that sets up your new device. It provides a wizard to follow a series of steps to initiate the device. Android setup also runs after factory reset and requires an internet connection to work. You can get rid of extra Android setup by deactivating the dual app mode. To do so: Go to 'Settings > Advanced settings' Tap on the 'Dual messenger' Dual app mode will be deactivated. See also: How To Get Rid Of Android Setup Notifications? You have 2 Facebook apps on your phone because you might have enabled dual messenger mode on your mobile. It may also be because you have installed two different versions of the Facebook application, i.e., normal app, lite, or beta. It may also be because your device is running parallel storage. Facebook provides multiple versions of its applications. These applications can be downloaded simultaneously on your device. If you have downloaded two versions of the same application on your phone, you will see two different Facebook apps within your application listing. You can check for multiple versions of the Facebook application by following these steps: Scroll down and find the Facebook application(s). You can also search 'Facebook' using the search barSee if you have multiple Facebook apps You can uninstall the extra application by tapping on the 'undesired' Facebook app and tapping 'Uninstall'. You may also have two Facebook apps on your Android if you used Facebook in your browser and allowed browser notifications for that website. or may also see two Facebook apps on your device if your device is running on dual app mode or partitions. To turn off these modes, see the first section of this article. You may have 2 Phone apps on an Android device if dual app mode or app cloning is active on your device. It may also result from having downloaded a third-party dialer app on the phone. You may also see a duplicate phone app if your device has parallel storage or partitioning. See "Cause 3: Android partition" above. If you do not have a secondary partitioning, then check for any third-party dialer application. To do so, go to 'Settings > Application' and look for an additional dialer app. You can uninstall the secondary application by tapping the 'Uninstall' button. Dual-app mode in Android allows you to run two instances of the same applications on your phone. It is also known as dual messenger mode as it allows running multiple instances of Messenger . Dual app setting is named differently in devices form different manufacturers, e.g., app cloning or app twinning. The dual-mode feature is useful if you want to run and manage multiple social media accounts simultaneously. Each cloned application has its own independent data and settings. However, if you uninstall the original application, this will also delete the cloned application. On the other hand, deleting the cloned instance of the application does not affect the original application. See also: How Do You Delete Recent Apps On Android? To get rid of dual apps on your Samsung, uninstall the cloned applications. You can also turn off dual application mode or app cloning. To uninstall a cloned/dual app, follow these steps: Go to Settings > AppsScroll down to find the duplicate applicationsTap on any duplicate appTap 'Uninstall' The dual app will be deleted from your device. To turn off the dual app mode: Go to Settings > Advanced settings Tap on the 'Dual Messenger' You can remove duplicate apps on your Android by turning off the dual-app mode or removing the partitioning from your Android. Partition in Android devices occurs due to encrypting the SD card. You can decrypt the SD card using the following steps: Go to 'Settings > Biometric & security' Scroll down and find 'Decrypt SD card' Tap on the 'Decrypt SD card' buttonEnter your device password to verify it is youWait for the decryption process to complete Your SD card will be decrypted and the partition will dissolve. See "Cause 3: Android partition" above for more details. See also: Why Do My Apps Randomly Install? To turn off the second WhatsApp, turn off dual messenger mode or app cloning for WhatsApp. You can also uninstall the second WhatsApp. To turn off dual-app mode, refer to the section How do I get rid of dual Apps on my Samsung? To turn off WhatsApp cloning, follow these steps: Go to 'Settings > Advanced settings' Tap on the 'Dual messenger' Scroll down to find WhatsAppToggle off WhatsApp cloning Your second WhatsApp application will be removed. You can also uninstall the cloned WhatsApp Go to to Settings > Application > WhatsApp, Tap on the second WhatsAppTap 'Uninstall'. See also: Will I Lose My WhatsApp Conversations If I Change My Phone Number? If you have two Chrome apps on your Android phone, it's likely due to dual-app mode being enabled or because you've created a shortcut for the application. To deactivate the dual-app mode, check out the preceding section. If you have created a shortcut widget for the Chrome app, you can remove it through these steps: Go to the extra Chrome app icon and long-press on itThe bin icon appears at the top of the screen drag and drop the Chrome icon onto the bin The extra app will be removed. You have two Google apps on your phone because you might have activated the dual-app mode or created a shortcut for the application. It may also be because you have run the Google application from another browser and allowed notifications. You can remove the Google app shortcut by following these steps: Go to the extra Google app icon and long-press itWhen the bin icon appear on the screen top, drag and drop the Chrome icon onto it The extra app will be removed. If you have allowed Google permission on some other browser, you can stop it by clearing the cache of that browser. To do so: Go to Settings > AppsScroll down and select the browser appT 'Clear cache'Confirm Your browser notifications will be cleared. Rest assured that pinning Chrome to your taskbar can help Browsers > Chrome 3 min. read Updated on October 4, 2023 updated on October 4, 2023 Readers help support Windows Report. We may get a commission if you buy through our links. Read our disclosure page to find out how you help Windows Report sustain the editorial team. Read more Key notes Getting two Chrome icons on the taskbar can be frustrating as well as time-consuming. As users report not being able to unpin one of the icons from the taskbar, we gathered a few fixes in this article. If you keep having issues with double Chrome icons, perhaps it would be best to switch to a new, better browser. Some users have reported having a duplicate Chrome icon on their taskbar in Windows 10/11. This can become extremely frustrating in time, as the space available in the taskbar is limited. Here's how one user described the issue on Microsoft Answers forums: Double Google Chrome icon on the taskbar. I've tried to unpin the first one on the left, and then pin the new one on the right, but I can't pin that one because there is no option to pin it. If you can, please help me! For these reasons, in this article, we will explore some of the best-proven methods to solve this issue and clear your taskbar from any unwanted icons. Read on to find out how to do it. It is conceivable that you have pinned the app's shortcut rather than the program itself if you are seeing multiple icons in the taskbar. If this is the case, you will need to unpin the shortcut. Therefore, when you activate the application, you will see that there is a duplicate icon in the taskbar. This is because Windows believes there are two distinct instances of the program now active.Now, let's see in more detail how you can remove two Chrome icons from your taskbar. Follow along! If you keep having trouble with Chrome, try another browser instead. We recommend Opera One because it offers a similar user experience and is compatible with all Chrome extensions. The browser is heavily optimized for user privacy and doesn't store tracking cookies or your personal info. It comes with a built-in VPN, an ad blocker, social media integrations, and more. Opera One Have an error-free experience on the web with this reliable browser. Open up File Explorer then copy-paste this location into your explorer. Note, if you can't see the AppData folder, check out how to show hidden folders in Windows 10: C:\Users\your_username here/AppData/Roaming/Microsoft/InternetExplorer/QuickLaunch/UserPinned/TaskBarLaunch Chrome and pin it to your taskbar. This way you will also fix the Chrome opens new icon on taskbar issue. To fix the Google Chrome taskbar duplicate issue, open Google Chrome then right-click the icon that is not active.Select Unpin from taskbar.Right-click on the other icon and select Pin to taskbar. Read more about this topic Right-click on each of the Chrome icons and select Unpin from taskbar.Click on the Start menu and search for Google Chrome.Drag and drop Google Chrome to your Desktop.Double-click the shortcut from your Desktop to open ChromeRight-click the Chrome icon and select Pin it to Taskbar. In this article, we explored the best-proven methods to solve having two Google Chrome icons on your taskbar. Please follow the methods presented in this article in the order that they were written to avoid any other issues. Moreover, we recommend that you take a look at what to do if the Windows 11 Taskbar is empty. Feel free to let us know if this guide helped you solve your problem by using the comment section found below. More about the topics: browser Milan Stanojevic Windows Troubleshooting Expert Milan has been enthusiastic about technology ever since his childhood days, and this led him to take interest in all PC-related technologies. He's a PC enthusiast and he spends most of his time learning about computers and technology. Before joining WindowsReport, he worked as a front-end web developer. Now, he's one of the Troubleshooting experts in our worldwide team, specializing in Windows errors & software issues. Reddit and its partners use cookies and similar technologies to provide you with a better experience. By accepting all cookies, you agree to our use of cookies to deliver and maintain our services and site, improve the quality of Reddit, personalize Reddit content and advertising, and measure the effectiveness of advertising. By rejecting non-essential cookies, Reddit may still use certain cookies to ensure the proper functionality of our platform. For more information, please see our Cookie Notice and our Privacy Policy. macOS / Earlier Operating Systems When I hover over my icons the Google icon literally shows as "Google Chrome 2". (just started happening). At times, I've noticed two windows will open simultaneously, but sometimes can't access the 2nd window. I noticed if I close the one window the other will close automatically. In general, I close all windows daily and clear all history daily, so I have nothing open. I also checked applications to confirm I only have one Google app loaded. Why is this happening? Is it a virus? How do I get rid of it? I'm an Apple newbie and appreciate any assistance that can be provided!! MacBook Pro with Touch Bar Posted on Mar 26, 2020 10:39 AM Reply Posted on Mar 27, 2020 1:13 PM Hi IBAWEE1,Thanks for using Apple Support Communities! I see you have a question about Google Chrome, and I'd like to help you get to the right place for assistance.Google Chrome is not an Apple app. I did find the Google Chrome Help site, which can hopefully get you started finding a solution. Google Chrome HelpI can provide you with instructions on how to reinstall an app, if you need to delete and reinstall.Install and reinstall apps purchased from the App Store on MacTake care! Page content loaded Mar 27, 2020 1:13 PM in response to IBAWEE1 Hi IBAWEE1,Thanks for using Apple Support Communities! I see you have a question about Google Chrome, and I'd like to help you get to the right place for assistance.Google Chrome is not an Apple app. I did find the Google Chrome Help site, which can hopefully get you started finding a solution. Google Chrome HelpI can provide you with instructions on how to reinstall an app, if you need to delete and reinstall.Install and reinstall apps purchased from the App Store on MacTake care! This thread has been closed by the system or the community team. You may vote for any posts you find helpful, or search the Community for additional answers. WHY? "Google Chrome 2" icon In the modern digital age, Google Chrome has become one of the most popular web browsers due to its speed, simplicity, and seamless integration with the Google ecosystem. However, many users occasionally encounter an unusual issue: duplicate Google Chrome icons appearing on their taskbars. This can be both confusing and distracting, leading to questions like, "Why do I have two Google Chrome icons on my taskbar?" and "How do I fix this?" In this detailed article, we will explore the core reasons for the duplication of Chrome icons, the implications of having multiple icons, and practical solutions to rectify the situation. By the end of this piece, you will understand why this phenomenon occurs and how to effectively manage your taskbar icons. Understanding the Taskbar Icons The taskbar in Windows operating systems serves as a quick access point for applications, programs, and utilities. It allows users to open, switch, and manage various applications with ease. App icons present on the taskbar can be pinned for quicker access, and these icons represent instances of the running applications. When users notice two Google Chrome icons on their taskbar, it generally indicates that there are two distinct instances of Chrome running. This can be due to various reasons, including application settings, installation anomalies, or user preferences. Reasons for Duplicate Icons Multiple User Profiles: Google Chrome allows users to create multiple user profiles. Each profile can have its own extensions, bookmarks, and personalized settings. If you have two profiles created on the same system, each may appear as a distinct icon on your taskbar. Different Installation Locations: If you've installed Google Chrome more than once—perhaps from different sources or locations—Windows may recognize each version as a separate application. For instance, one version could be installed through the official Google website, while another could be installed via the Microsoft Store or through a third-party installer. Pinned Icons: Users often pin applications to the taskbar for quick access. If an instance of Chrome is pinned, and you subsequently open another instance of Chrome from a different source (like a shortcut on the desktop or the Start menu), it may create a second taskbar icon. Running Multiple Instances: Sometimes, users unknowingly run multiple instances of Chrome. This can be done for a variety of reasons, such as wanting to use different accounts simultaneously or for testing purposes. Corrupted Shortcut Files: Corrupted shortcut files can also lead to irregularities in taskbar behavior. If one of the Chrome icons on the taskbar is linked to a corrupted or outdated shortcut, it may display incorrectly or duplicate the application icon. Chrome Canary or Developer Editions: If you are using the regular version of Google Chrome and have installed Google Chrome Canary or a developer version alongside it, these separate installations may also show unique icons on your taskbar. Implications of Duplicate Icons Having duplicate icons may not significantly impair functionality but can lead to confusion and minor inconveniences, such as: Difficulty in Managing Windows: Users may struggle to distinguish between the two instances, leading to a cluttered workspace and inefficient window management. Resource Consumption: Running two instances of Chrome simultaneously can consume more system resources, affecting performance, especially on systems with limited hardware capabilities. Unintended Closing: Users may accidentally close one instance of Chrome, disrupting work or causing loss of unsaved data from one of the profiles. Fixing the Duplicate Icons Issue Now that we've explored the reasons behind the double icons, let's delve into practical solutions to fix the issue. Identifying and Closing Duplicate Instances: First, check if you indeed have two instances running. Right-click the taskbar and select "Task Manager." Look under the "Processes" tab for multiple entries of Google Chrome. If you see multiple instances, you can close one by selecting it and clicking "End Task." Afterward, check your taskbar to see if the duplicate icon disappears. Removing Extra Pinned Icons: If one icon is pinned to the taskbar while the other isn't but is still showing up, you can unpin it. Right-click the duplicate icon and select "Unpin from taskbar." To ensure you have the desired version, launch Chrome from wherever you want it pinned first, then pin that instance. Managing User Profiles: If you have multiple user profiles in Chrome, ensure that you're mindful of how you launch each profile. When you click on a profile icon, it may create a new instance. You might want to consolidate your browsing needs into a single profile or manage them carefully. Check Installation Locations: Verify where Chrome is installed on your system. Open the Chrome browser and click on the three dots in the upper right corner to navigate to "Help" > "About Google Chrome." If Google Chrome was installed from both the official website and the Microsoft Store, you might want to uninstall one version to reduce redundancy. Shortcut Integrity: If you suspect corrupted shortcuts, create new shortcuts for Chrome. Right-click the desktop, select "New," and then "Shortcut." Enter the path of the Google Chrome executable (usually located in C:\Program Files\Google\Chrome\Application\chrome.exe), and follow the prompts to create a new shortcut. Pin this shortcut to your taskbar. Uninstalling Extra Versions: If duplicate icons persist due to multiple installations, you can uninstall the less preferred version. Go to the control panel, navigate to "Programs and Features," and find Google Chrome. If more than one version is listed, right-click and select "Uninstall" for the version you don't need. Clear Taskbar History (Windows 10/11): Sometimes, clearing the taskbar's previous history can rectify icon issues. Right-click the taskbar and choose "Taskbar settings." Scroll down to "Notification area" and select "Select which icons appear on the taskbar." Toggle off the unnecessary applications. Using Command Prompt as an administrator. Type the following commands one by one to reset Google Chrome's settings: taskkill /f /im chrome.exe del /f /q %localappdata%\Google\Chrome\User Data\Default*. * Ensure you back up any necessary data before executing permanent deletion commands. Checking for Updates: Regularly updating your applications can prevent bugs and glitches. Go to Chrome's settings and navigate to "About Chrome." Ensure that you're using the latest version, which might resolve numerous bugs, including those related to icons. Conclusion Encountering duplicate Google Chrome icons on your taskbar may initially appear trivial, but it can lead to major frustrations. By understanding the underlying reasons and applying the solutions outlined above, you can effectively manage and resolve this issue. Remember that regular maintenance of your browser, including checking for unnecessary instances, managing profiles, and uninstalling duplicates, can contribute significantly to a more streamlined and efficient browsing experience. With these approaches, you'll not only declutter your taskbar but also optimize your overall workflow, ensuring that you remain focused on what matters most—browsing effectively and efficiently in a world that demands pixel-perfect clarity in user experience.