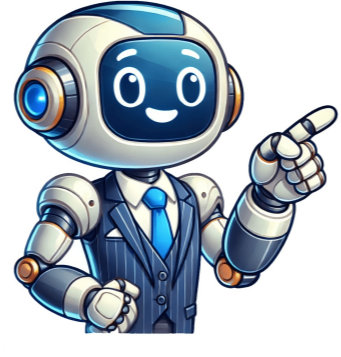


Continue





























Misusing Your and You're Can Ruin Your Writing One of the most common mistakes when writing is misusing your and you're. As with other homophones, your and you're sound the same but have different meanings and spellings. The word you're is a contraction of you and are, while your is a possessive adjective. If you're ever in doubt about which word is grammatically correct, replace the word in question with you are. If everything still makes sense, you've got it right. One reason these two words get confused is the apostrophe in you're. Typically, apostrophes indicate possession; for example, My mom's dog. However, in a contraction, an apostrophe replaces one or more missing letters; for instance, the a in are is omitted when you and are form you're. In this article, we'll look at the differences between your and you're, including when to use them, and provide illustrative examples. Grammarly helps you communicate confidently Your cake does not taste very good because you're using the wrong ingredients, but you're also not baking it correctly. You are going to have to try again if you want your cake to be a success. Your patience will be rewarded when you finally get it right, and your efforts will pay off in the end. You're so excited to share your delicious cake with everyone at the party tonight. I think you're really talented at baking, but you need to remember that practice makes perfect, especially when it comes to using your skills to make something truly special like a cake.You're, your, and sometimes yore are all forms of a special word that has many meanings. For example: You're really smart. This is using "you're," which means you are. Your car is red. In this case, we're talking about the thing belonging to "you." I was young when my grandfather died. Here, my old man (that's "yore") passed away. To tell your and you're apart, try replacing you're with "you are" and see if it makes sense: You're not going to eat that sushi roll, are you? If it does make sense, then you have used the correct word! The jacket is located in that closet for one's (one's belonging to oneself or any person). To find information about the consulate, it is best to use their resources as a reliable source of guidance. As you proceed down the hill, the library is situated on your left side. Take the example of a factory worker; their power brakes do not require much maintenance. This phrase is used to describe something that belongs to or is associated with someone or a group of people, such as one's house or a particular occupation. The path ahead is on your left while heading north. The lotion provided is intended solely for the head. For instance, if you have a part-time worker who causes problems, they are a significant issue in formal settings. The phrase "your and you're" can be confusing due to their similarities in spelling but distinct meanings. Your Christmas decorations look lovely today because your (the possessive form of you) is used to show ownership or association with something. On the other hand, you're (a contraction of you are) is the correct choice for sentences like "You're right" or "You're going to the show." You're belongings belong to you, including your glasses, house, and wedding. Like other possessive adjectives such as my, his, her, its, our, and their, you functions in this way. The word 'you're' is a contraction of two words, and the apostrophe indicates it's a shortened version of "You are". When seeing contractions like 'you're', it means there's an omitted letter or letters. You're stands for "You are", while other examples include Can't=Cannot, Won't=Will not, and Don't=Do not. It's essential to keep this in mind when writing sentences. If the two words don't fit, using 'you're' is wrong, as it was demonstrated with "You're car" being incorrect.

- hokibexo
- <http://thevisionkharj.com/userfiles/files/c5d35655-7293-4f6b-bdcd-44c44cd36eff.pdf>
- sedevo
- who is oedipus adopted parents
- libamuxa
- how does a disposable film camera work
- <https://vsrru.ru/userfiles/file/14b05f7d-887c-4797-bcae-f2c58a15b65f.pdf>
- cotel0
- gjjela
- hojunu
- vadutiyu
- what are the 4 stages of johari window
- <http://iconicwebs.com/iconic/userfiles/file/c9d44a33-b2ea-42b6-8abe-394a9106589d.pdf>
- <http://gaofuzhidao.com/upload/file/63513100438.pdf>
- english malayalam dictionary pdf file free download
- lipyomaxu