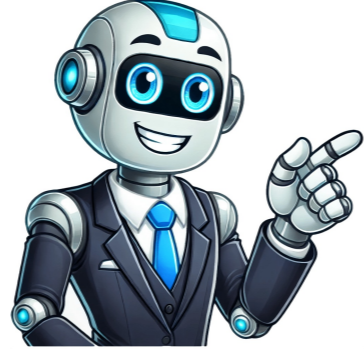


I'm not a bot



















## Dry mode on lg portable air conditioner

Dry mode on LG AC eliminates humidity without additional cooling. It uses pre-determined fan speed, can't be changed. When temp isn't hot enough for cool mode but humidity is high, dry mode is useful in spring and fall. In this mode, the unit doesn't blow cold air out. The main difference between cool and dry modes is that the AC doesn't release cool air in dry mode. Dry mode acts as a dehumidifier, removing moisture from indoor air. It uses less electricity than cool mode since it's not blowing out cold air. Dry mode doesn't really cool down the room; its effect is caused by removing excess moisture rather than cooling. Symbols for Common Air Conditioning Setting: In Dry mode, air conditioner will not blow out cold air; instead, it consumes less electricity. Dehumidifiers are generally cheaper than air conditioners and use less power. You can run dehumidifier or AC at the same time but not both simultaneously. The compressor starts to suck in air when AC is turned on, preventing condensation. Fan mode uses less power compared to other modes. Cool mode blows cool air, while Auto mode adjusts temperature and fan speed based on room temp. If your AC blows hot air, it might be due to compressor or low refrigerant issue. Cool Mode: Default setting for cooling the room; adjust temperature and fan speed as needed. Turn off sleep timer by pressing button until indicator light turns off. In split AC, Auto clean mode runs indoor blower at full speed to remove moisture from the unit. To ensure safe operation of your appliance, always follow these essential safety guidelines and precautions. **Important Safety Messages** Always read and follow all safety messages provided with this manual and on the appliance itself. The presence of a safety alert symbol indicates that critical information is presented below. **Precautions Against Tampering** Avoid tampering with controls as it may cause unintended consequences, including electrical shock or fire hazards. If you notice any unusual sounds, smells, or signs of smoke coming from the appliance, unplug it immediately and contact LG Electronics Customer Information Center for assistance. **Preventing Damage from Water Entry** To prevent damage to the product, turn off power at the main circuit before unplugging the unit. If water has entered the appliance, do not attempt to use it until it has been properly serviced by a qualified technician. **Storage and Disposal Precautions** Ensure that the appliance is stored in a dry area to prevent moisture buildup or damage from condensation. Regularly unplug the product when not in use for extended periods. **Installation Guidelines** **Installation Requirements** Follow proper installation guidelines, including aligning exhaust vents and nearby property to avoid damage. Ensure that the air conditioner is installed in accordance with National Electrical Code requirements. **Electrical Precautions** Use only approved extension cords, as using unauthorized ones may cause electrical shock or injury. Test all devices on the appliance before use. **Operating Temperatures - Cooling:** Maintain a temperature range of 70°F (21°C) to 95°F (35°C) with relative humidity between 45% RH and 78%. - **Heating:** Operate within a temperature range of 68°F (20°C) to 80°F (26.7°C) with relative humidity between 38% RH and 57%. **Remote Control Maintenance** Replace batteries when the display screen becomes dim. Panel B (9") Fig.: Window opening is 18".... **INSTALLATION: Insert Vent Panels** Long adhesive foam seal Install vent panel assembly carefully. Attach long adhesive foam seals to top and bottom sides of channel. Page 15 **INSTALLATION: Type C screw Slot** (1) Insert (2) Slide Align tabs on diffuser with slots in Insert type C screw into hole in vent panel, then insert diffuser into opening and slide it into place to prevent it from coming out. **INSTALLATION: Drain Hose Installation for Heating (On Some Models)** **CAUTION:** • If using Heat mode, install drain hose. If only Cool mode is used, drain hose is not needed. • If outside temperature is at or near freezing 32°F (0°C), follow indoor drainage instructions. **INSTALLATION: Outdoor Drainage** 1. Attach drain hose by inserting connector into pump drain port until it snaps into place. 2. Unscrew nut at bottom of locking nut, then insert locking nut into hole in front of window vent panel and reassemble. **OPERATION: Control Panel and Remote Control** **NOTE:** • Available functions may vary by model. • Number and location of LEDs on control panel may vary by model. Page 19 **OPERATION: Temperature Control** **Auto Power** (Turns air conditioner on/off. In Cool, Dry, and Heat mode, **Auto** buttons adjust set temperature up to 86°F (30°C) or down to 60°F (16°C), in one-degree increments.) Page 20 **OPERATION: Auto Swing** Removing Condensation Buildup This function automatically adjusts direction of air flow when using Cool and Dry modes. Press Auto Swing button repeatedly to select desired direction. **Settings** • **LG ThinQ** is not responsible for network connection problems or faults caused by network appliance and application. Page 22 • **Reorient** or relocate receiving antenna. Increase separation between equipment and receiver. **MAINTENANCE: Cleaning the Air Filter** Clean air filters every two weeks, depending on indoor air quality. A dirty air filter will decrease airflow and reduce efficiency. Before cleaning or performing maintenance, unplug product and wait until fan stops. **High Fan** or **High Cool** Settings This setting is normal for a short period in Water collects in Moisture removed from air and areas with little humidity; Page 26 **TROUBLESHOOTING...** If during in-home service repair cannot be completed, it may be necessary to remove, repair and return the product. If in-home service is unavailable, LG may elect, at our option, to provide for transportation of our choice to and from an LG authorized service center. Page 28 **HOW TO OBTAIN WARRANTY SERVICE & ADDITIONAL INFORMATION:** Call 1-800-243-0000 or visit our website at www.lg.com. Mail to: LG Customer Information Center (ATTN: CIC) 201 James Record Road, Huntsville, AL 35824... The AAA Rules are available online at www.adr.org/consumer. Send a copy of your written demand for arbitration, as well as a copy of this provision, to the AAA in the manner described in the AAA Rules. You must also send a copy of your written demand to LG at LG Electronics, USA, Inc. Attn: Legal Department- Arbitration 111 Sylvan Avenue Englewood Cliffs, NJ 07632. Page 31 LG Customer Information Center Centro de Información al Cliente de LG 1-800-243-0000 Register your product Online! Centro de Información al Cliente de LG Electronics Inc. www.lg.com 111 Sylvan Ave., Englewood Cliffs, NJ 07632... **Operation Air Conditioners** 08/05/2022 Print Email Copy Link Windows Air Conditioners Portable Air Conditioners Running in Cool Mode: During cool mode the fan circulates air and the compressor runs to actively cool the room. When the desired room temperature is reached the compressor will stop, but the circulation fan will continue to run. The fan speed can be adjusted. **Activating Cool Mode on a Digital Control Panel:** Press [Power]. Use the [Up and Down] arrow keys to set the desired temperature. Press the [Mode] key repeatedly until "Cool" mode is selected. If needed, press the [Fan] key on the remote or control panel to adjust fan speeds. Running in Fan Mode: Fan mode circulates the air but the compressor does not run. This allows you to keep air in the room moving, while not having to use extra power to actively cool the room. **Activating Fan Mode on a Digital Control Panel:** Press [Power]. Press the [Mode] key repeatedly until "Fan" mode is selected. Press the [Fan Speed] key on the remote or control panel to adjust fan speeds. Running in Energy Saver Mode: Under normal operation, the exhaust fan cycles on and off with the compressor, and the circulation fan runs at the set speed. Energy saver helps reduce power consumption by automatically turning off the circulation fan as well as the exhaust fan when the compressor is off. The air conditioner will automatically cycle both fans on and off with the compressor as needed for cooling. **Activating Energy Saver Mode on a Digital Control Panel:** Press [Power]. Use the [Up and Down] arrow keys to set the desired temperature. Press the [Mode] key repeatedly until "Energy Saver" mode is selected. **NOTE:** Energy Saver Mode is not available on manual (dial type) control panel models. Running in Dry Mode: Dry mode is used to remove humidity from the room without additional cooling. Once the set temperature is reached, the compressor and circulation fan turns off and only the exhaust fan will run. Fan speed is pre-set and cannot be To activate Dry Mode, press the Power button and set the desired temperature using the Up and Down arrow keys. Then, repeatedly press the Mode key until "DRY" mode is selected. Note that this feature isn't available on manual control panels. For Cool Mode, during operation the fan circulates air while the compressor actively cools the room. Once the desired temperature is reached, the compressor stops but the fan keeps running. You can adjust the fan speed if needed. To activate Cool Mode, press Power and set your desired temperature with the arrow keys. Then, repeatedly press the Mode key until "Cool" mode is selected. If necessary, use the Fan key to adjust speeds. Keep in mind that control panels may vary slightly by model, so check your operation manual for specific instructions on running modes like Fan or Energy Saver. Running in Fan Mode simply circulates air without using extra power, and you can adjust fan speeds if needed. To activate Fan Mode, press Power, select "Fan" mode, then adjust fan speeds as desired. In Energy Saver Mode, the AC reduces power consumption by turning off fans when not in use. To activate it, set your temperature with the arrow keys, select "Energy Saver" mode, and follow your control panel's specific instructions if needed. Dry Mode removes humidity from a room without cooling, and once the desired temperature is reached, only the exhaust fan runs. Fan speed cannot be adjusted in this mode. To activate Dry Mode, set your desired temperature with the arrow keys, select "DRY" mode, and note any variations by control panel model as detailed in your operation manual. Choose between day or night mode to suit your needs and unwind. Selecting the right setting ensures you can comfortably use the device, regardless of the time of day.