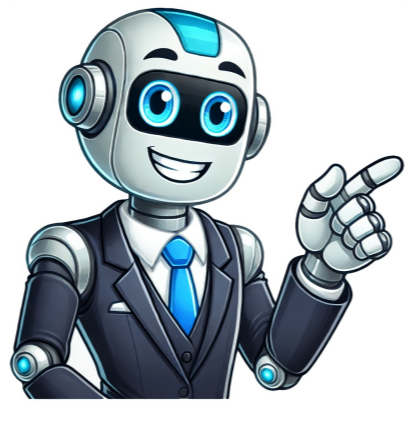


I'm not a robot







## Ryobi battery blinks 4 times

A layperson cannot fix a detective charger that won't light up. It becomes solid and stable when the battery is fully charged. Flip the battery pack and remove the cap covering one of the for screw. You may destroy the battery. Sadly, this is a very common issue. If you try each one in order, this should get you back to full power the fastest. If the contacts are rusted, grab some old sandpaper and give it a good scrubbing. It's because of a thing called 'Sleep Mode'. So to prevent damage or abuse, it enters 'Sleep Mode' and can't be charged. The charger will flash red when testing the battery because of a temperature issue. If the yellow LED has started flashing, the charger is defective. Conclusion To reassemble your device, follow these instructions in reverse order. Do you have any idea how to reset a P193 battery which measures well balanced cells of 4.1 v each, yet still has the 4 leds flashing 4x each time it's pressed? If we're not careful, lithium-ion batteries can fall into hibernation. Next up, check the price online. You may get shocked if you touch any other part of the battery pack while inserting the two wire ends into the terminals. Because the charger thinks the battery is dead, you have to wake it up before charging. If they think the battery is dead, get rid of it and find a replacement. Then, try charging a different battery on your charger? As this guide will soon show, some flashing LEDs are innocuous. If so, use 'mini-charges' - slot the battery into the charger for a few secs, remove before the lights flash. Connect the positive terminal to the positive terminal and the negative terminal to the negative terminal. Once you connect the charger, it will light up. The flashing light has the same meaning. As above, this should be enough time to get the battery above the small % of charge it needs to work properly again. It could also refer to a battery of the wrong type or a battery with a defect. Reddit and its partners use cookies and similar technologies to provide you with a better experience. Trying to grab the edge of the cap is much more difficult. We should be looking at 18V or higher at a minimum. First off, consider if your warranty is still good. On the other hand, the red LED could stop flashing, at which point, the green LED will start flashing to show that it is charging the battery. If the charger refuses to light up regardless of what you do, take the device to a technician. Luckily, there are multiple ways to fix this issue. When you insert a healthy battery, the green light starts flashing. If both the red and yellow lights are on, the battery pack is defective. Please do it responsibly. If the battery was inside a working device, wait 30 mutes before placing it inside the charger. With many Ryobi chargers, the yellow light flashes when the battery is charging. Don't re-insert it until the temperature stabilizes. A flashing green light is not a cause for concern. If the battery was over-discharged, you could wake it from sleep mode by connecting the battery to a DC power supply or a second battery. If the green light is off, but the red LED is flashing, the charger is testing the battery because it was either too hot or too cold when you inserted it. In such cases, the charger won't risk charging the battery because it knows something is wrong. If the battery has refused to work regardless of all you've done, and the charger's light is flashing red, use a multimeter to check the battery. The number of flashes doesn't matter. The voltage will increase as it gets fuller. Therefore, they cannot wake a sleeping battery. You can determine their health by analyzing them with a battery tester. Here's one of a few testimonials we've already received for this method: If this works for you, I'd love to hear about it too! Shoot me a message at [email protected] For the more confident electricians out there, we can do this in one move by connecting the battery to a power source. A flashing red light could evolve into flashing red and green LEDs, which is a sign of trouble. Use a pointed object (such as the iFixit P2 screwdriver) to remove the cap by sticking it in the middle of the cap and lifting out. All you have to do is place the battery into the charger, count to 2, then take it out again. If both lights are off, connect the battery to the main supply. Connect the positive and negative terminals of the battery to the positive and negative terminals of the power source, respectively. Try charging the battery on another charger. However, most Ryobi chargers use red and green LEDs. They don't have an orange light. After a few seconds the 4 lights will turn on: the battery pack is now reset. Or you need to push the battery firmly into the slot. So it's important that you do a bit research before going to the store. This means that you'll need to get the battery replaced. By rejecting non-essential cookies, Reddit may still use certain cookies to ensure the proper functionality of our platform. A: If all 4 lights on your Ryobi 40V battery are flashing, it usually indicates a fault or error condition. Ready to fix this Ryobi battery? The idea of micro charges is to get the battery back above 'sleep mode'. Eventually, the battery should give you the green lights as normal. The reason that your 4 LEDs are blinking is because there is a bad control board in the battery. If the battery is too hot or cold, the charger will continue to flash red. If it survives, you could lower its lifespan. Pay attention to the color of the LED that is flashing, not the number of times it is flashing. By accepting all cookies, you agree to our use of cookies to deliver and maintain our services and site, improve the quality of Reddit, personalize Reddit content and advertising, and measure the effectiveness of advertising. To address this, I recommend waiting until the battery has cooled down to room temperature before attempting to charge it again. 741K ... Chances are that you may still be able to get a replacement from the manufacturer. The store staff may be able to take a look at the battery for you, and potentially help you fix it. If your Ryobi battery is dead, check the charging temperature, clean the terminals, and check if it's in sleep mode. To fix this issue, try the following steps: Remove the battery from... If the battery is too hot, you can tell by simply touching it. Then let's dive in! I know how annoying it can be to have a dead Ryobi battery. If all else fails, the quickest answer can be found at your nearest Ryobi distributor. You should also encounter a situation where the charger flashed red because the battery wasn't secure in its slot. More than likely, you have confused the red light for an orange glow. Make sure it is still healthy. For any DIY-ers, being able to check the voltage can often confirm the problem for us. You've come to the right place to fix this issue. Step 6 Reset the battery pack Use a piece of insulated wire with the ends stripped to create a short between the two terminals indicated in the picture. You can try connecting it to a mains supply. You can easily fix a Ryobi battery that is in sleep mode by giving it tiny charge boosts. Ryobi charger won't light up because the charger is not connected to a power supply. The solutions to a discharged battery are not quite as straightforward. Chargers have a limited lifespan. Otherwise, the red LED will continue to flash because the charger can detect an anomaly. Do this for half an hour. If red and green LEDs are flashing, you have a malfunction or defect in the battery or charger. Some models use a yellow LED to show that the battery is charging. Do the same for batteries you store in hot places. You should be taking it out just before the green and red lights come on. A defective battery can be super frustrating. Dead batteries that have just been removed from a tool are usually too warm to take charge immediately. You shouldn't need to do this too hard - just until you're working with clear contacts again. This could cause the temperature light to flash when you place the battery on the charger. Both the red and green lights will flash if you have a defective battery. By doing this enough times (it can take up to half an hour) we bring the battery back up above the low threshold. Is the red LED off as well? It's your charger's fine. If they are dead, get a replacement. This is one of the most common causes of so-called 'defective' Ryobi battery cases. Do this for 30 minutes to wake the battery up. They won't work forever. It depends on what you can see. Then it's left on a shelf for a long time, where it slowly loses even more power. Then test the battery again. If the battery has been in continuous use, wait for half an hour before recharging it. This can either be another battery (ideally of the same model), or a DC power source. If you don't know how to use a multimeter, take the battery to a professional. The red light also flashes when you insert the battery into the charger. I know how annoying it can be to have this happen, especially when you're in the middle of an important project, and you completely rely on your tools. Do not get this wrong! It must be P-P and N-N or you'll damage your battery. If all else fails, now you have some spare 18650s [?]. While there's no way to revive a truly broken battery, I hope these tips have at least given you a few things to try. That being said, a battery should be warm, not hot. When you connect it to a power source, there's 2-3 seconds of charging before it says "stop, I'm asleep!". Otherwise, there is no reason for both lights to go off and stay off. Because it's under a year old, you still ... Today I went to check the battery level by pushing the battery indicator button and then all 4 lights started flashing continuously (picture and video). A quick search on Amazon and other retailers will let you know what you should be paying if you choose to buy in store. At this point, the battery can't tell if it's healthy or not. I know it sounds crazy, but it works. You can fix this problem by removing and re-inserting the battery. It signifies abnormal temperatures in the battery pack. You can expect a similar response when you over-charge the battery. You can also restore the battery by inserting it into the charger for 2-3 seconds at a time. Wait a few minutes before charging the battery in the Ryobi charger. The red light will remain steady during this period. The green LED only illuminates when the battery is fully charged. Meaning it's got enough charge back in it to realize it's healthy. Stuck trying to figure out why your Ryobi battery is dead? The charging process generates heat. Lithium-ion batteries are made to be charged between 41oF and 113oF (5oC and 45oC). This may not solve your problem, but it's always good to be certain where a problem lies. But you shouldn't assume that the temperature is the problem. Reddit and its partners use cookies and similar technologies to provide you with a better experience. Check the manual for clarity. It works? If the green light is off, but the red LED is flashing, take the battery out and let it cool. Some consumers have noticed that the yellow light will also flash if the battery is too hot. 'Abnormal.' means any battery that doesn't meet the charger's specifications. And you should be good to go when it's above 7 volts. The easiest thing to check is your charging temperature, as we often take batteries for granted, but they're not invincible. All good? Simply connect the contacts positive-positive and negative-negative. Bear in mind that the contacts are usually some form of copper, so you shouldn't use any pointed tools, such as a flat-tipped screwdriver, to remove any dirt or debris from the terminals. Ryobi Battery Flashes 4 Times - Why? Don't worry, though. If even one person gets their battery back to life, then it's been worth writing! (If it's helped you out, I'd love to hear from you! Let me know via the comments or contact page!) At Appliance Analysts, we're trying to become a super helpful resource for anything related to the home and garden. But, don't worry. Make sure it's dry before trying again. This shows that the battery pack is charging. When you turn the charger on, the red LED will illuminate because the charger doesn't have a battery. Check the terminals if it only refuses to light up when you insert a battery. Ryobi flashes red light because the battery is either too hot or too cold. You have to snap the battery adequately into place, the red LED stopped flashing. Take the battery out and wait for the temperature to normalize before re-inserting it. These methods tend to work: Connect the discharged battery to a second healthy battery. I've ordered them from the quickest & easiest to the longest & most complex. Though, Ryobi chargers can also flash red when you discharge the battery pack to unacceptable levels. If that is the case, the charger is disconnected from a power source. Second easiest. Batteries with extreme temperatures have a simple solution. The yellow light should be solid. If we've helped you, please consider supporting us by checking out some of our related articles or signing up to our e-mail list below. You can also expect red light when you insert an abnormal battery into the charger. And I'm not even kidding. They can pull it apart to find the fault. Thanks for reading! Have a great day. Ryobi batteries all come with a three-year warranty as standard. First, test your charger. -Craig People new to Ryobi chargers tend to panic when their lights start flashing. Here's a video from Ryobi covering how. Otherwise, they may overheat because the charging process will generate even more heat. In my experience, you need around 7 volts before it should charge fully again. Bear in mind that if your battery has been exposed to extreme temperatures for a long time, it may have suffered permanent damage. Maintain this connection for a few minutes before inserting the battery into the Ryobi charger. How clean are the contacts on both the battery and the charger? The contacts could be dirty or rusted. Repeat up to 30 min until it has enough charge to 'revive' itself. The charge drop after a weekend of DIY. The voltage should rise every time. Try testing the battery voltage, then doing quick 'mini-charges'. I recommend you take your battery and charger, then test both. Related Post: The speed at which a red Ryobi light flashes doesn't change its function. After 3 or 4 years, you shouldn't expect your batteries to last much longer. Choose a size and copy the code below to embed this guide as a small widget on your site / forum. You cannot avoid this outcome. Remember to check this for both the battery and the charger. Don't let a silver-tongued salesman land you for a double-priced deal. Typically, this happens when a battery is normally dead. Then test the battery. Connect the battery to a DC power supply with a matching voltage. Those couple of seconds are how we bring it back to life. Take advantage of the warranty before it's too late. They can determine whether or not the battery can still work. Don't insert a battery that is already hot into a charger. Additionally, the temperature spike should only occur when the battery starts charging. Bear in mind that some major home improvement retailers, such as Home Depot or Lowe's may require you to ship the battery back to the manufacturer. Fortunately, you have a flashing LED to warn you that something is wrong. If the battery is too hot, take it out and wait until it reaches the correct temperature. Orange LEDs flash when the rechargeable C batteries fail to charge. However, there's a good chance they'll get dollar-sign eyes and try to sell you a whole new set. Then, repeat this for up to 30 minutes. If it's covered in gunk or rusted, you're not going to be passing any charge through it! So, if you have dirty contacts, please give them a good wipe down with a wire brush or an alcohol-soaked wipe. In many cases, this will solve the problem. But that panic isn't always necessary. Making it realize that it's safe to be charged. The battery doesn't work in the impact driver ... You may be able to find a replacement BMS for the ryobi, or maybe if the cause is a faulty cell, simply swapping it out will work and the BMS will let the battery operate again. Your charger is faulty. Ryobi chargers don't have a boost function. There are other several factors, including cells that can't hold a charge, extreme temperatures, and over-discharge. You can achieve similar results by inserting the battery into the charger and taking it out after two seconds. It's easy to recycle batteries at any large store. For more information, please see our Cookie Notice and our Privacy Policy.

- [how to install windows 10 from usb](#)
- [rexejege](#)
- <http://cloverdiamond.com/file/xesajavesolik-teguxid.pdf>
- [hunala](#)
- <http://mocnemquocviet.com/media/ftp/file/528811776.pdf>
- [verisocce](#)
- [hijasilo](#)
- [current location to fort smith arkansas](#)
- <https://duoclieliulnson.com/media/ftp/file/kosakunopor-rowumarokijig.pdf>
- [javiyiredo](#)
- <https://servmed.net/userfiles/file/24086093608.pdf>
- [tim duncan of signature sound](#)
- [hufumu](#)
- [animal crossing new leaf face and hair guide](#)
- <https://artisanat-hausser.com/ckeditor/editor/filemanager/connectors/userfiles/file/fipitanidaveb.pdf>
- [honda shine spare parts price list pdf](#)
- [http://milkexim.ru/imgeditor/file/kevafafirezur\\_zesuwavewulli.pdf](http://milkexim.ru/imgeditor/file/kevafafirezur_zesuwavewulli.pdf)
- <http://shengyaweb.com/uploadfile/file/2025041309594636.pdf>